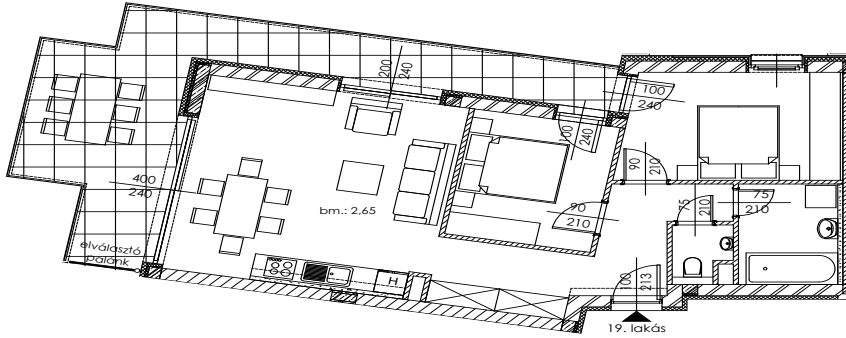
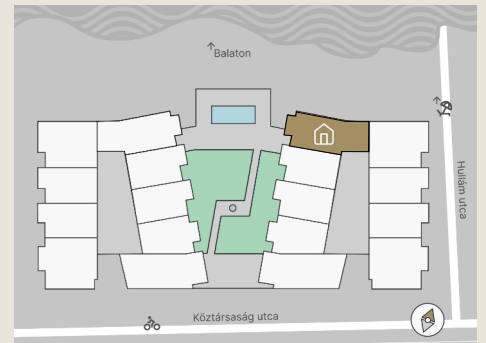




A.19

Apartment size: 67,01 m²
Terrace size: 27,19 m²



| | |
|---------------|----------------------|
| Entrance Hall | 10,58 m ² |
| Living Room | 22,81 m ² |
| Room I | 12,22 m ² |
| Room II | 9,86 m ² |
| Kitchen | 4,78 m ² |
| Bathroom | 5,26 m ² |
| WC | 1,50 m ² |
| Storage | - |

The property measurements are based on the permit plans and may change slightly during the finalization of the construction plans and execution process.



+36 20 44 77 615
www.lellewave.hu
ertekezes@lellewave.hu

LelleWave Residence is being built in Balatonlelle, **just 100 meters from the waterfront**, on the corner of Köztársaság and Hullám Street. The building is located only a 7-minute walk from the city center, putting all urban services within easy reach.

Key Highlights of LelleWave Residence:

- ✓ Financing: **20%** down payment, **80%** upon handover.
- ✓ Value-retaining location with continuously growing demand.
- ✓ Ideal for both personal use and rental investment.
- ✓ Balatonlelle is **among the top 5 most popular destinations** at Lake Balaton.
- ✓ Premium Quality: High-end construction with energy-efficient smart solutions.

