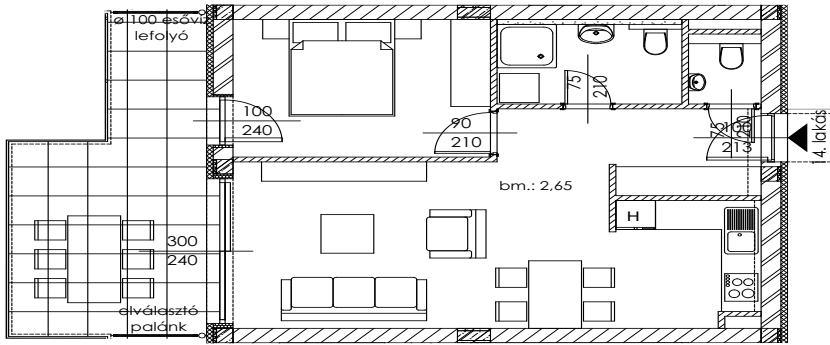
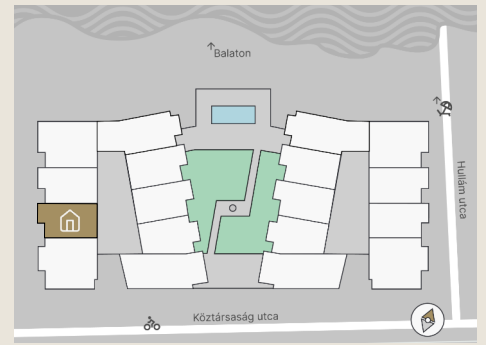




# B.14

Apartment size: 48,80 m<sup>2</sup>  
Terrace size: 16,71 m<sup>2</sup>



|               |                      |
|---------------|----------------------|
| Entrance Hall | 6,03 m <sup>2</sup>  |
| Living Room   | 20,14 m <sup>2</sup> |
| Room I        | 11,12 m <sup>2</sup> |
| Room II       | -                    |
| Kitchen       | 5,60 m <sup>2</sup>  |
| Bathroom      | 4,54 m <sup>2</sup>  |
| WC            | 1,37 m <sup>2</sup>  |
| Storage       | -                    |

The property measurements are based on the permit plans and may change slightly during the finalization of the construction plans and execution process.



+36 20 44 77 615  
www.lellewave.hu  
ertekezes@lellewave.hu

LelleWave Residence is being built in Balatonlelle, **just 100 meters from the waterfront**, on the corner of Köztársaság and Hullám Street. The building is located only a 7-minute walk from the city center, putting all urban services within easy reach.

## Key Highlights of LelleWave Residence:

- ✓ Financing: **20%** down payment, **80%** upon handover.
- ✓ Value-retaining location with continuously growing demand.
- ✓ Ideal for both personal use and rental investment.
- ✓ Balatonlelle is **among the top 5 most popular destinations** at Lake Balaton.
- ✓ Premium Quality: High-end construction with energy-efficient smart solutions.

