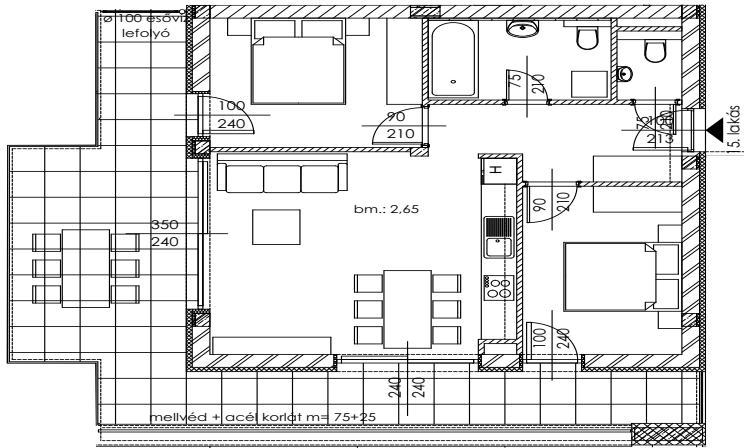
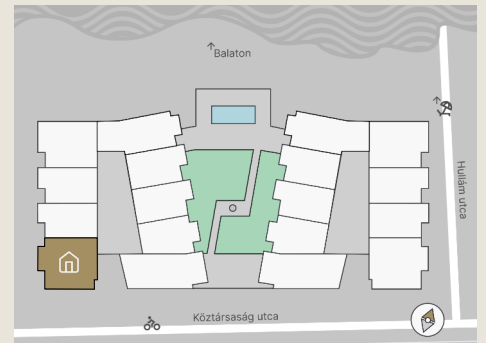




B.15

Apartment size: 59,94 m²
Terrace size: 33,88 m²



| | |
|---------------|----------------------|
| Entrance Hall | 6,70 m ² |
| Living Room | 17,97 m ² |
| Room I | 10,80 m ² |
| Room II | 10,53 m ² |
| Kitchen | 6,78 m ² |
| Bathroom | 5,62 m ² |
| WC | 1,54 m ² |
| Storage | - |

The property measurements are based on the permit plans and may change slightly during the finalization of the construction plans and execution process.



+36 20 44 77 615
www.lellewave.hu
ertekezes@lellewave.hu

LelleWave Residence is being built in Balatonlelle, **just 100 meters from the waterfront**, on the corner of Köztársaság and Hullám Street. The building is located only a 7-minute walk from the city center, putting all urban services within easy reach.

Key Highlights of LelleWave Residence:

- ✓ Financing: **20%** down payment, **80%** upon handover.
- ✓ Value-retaining location with continuously growing demand.
- ✓ Ideal for both personal use and rental investment.
- ✓ Balatonlelle is **among the top 5 most popular destinations** at Lake Balaton.
- ✓ Premium Quality: High-end construction with energy-efficient smart solutions.

