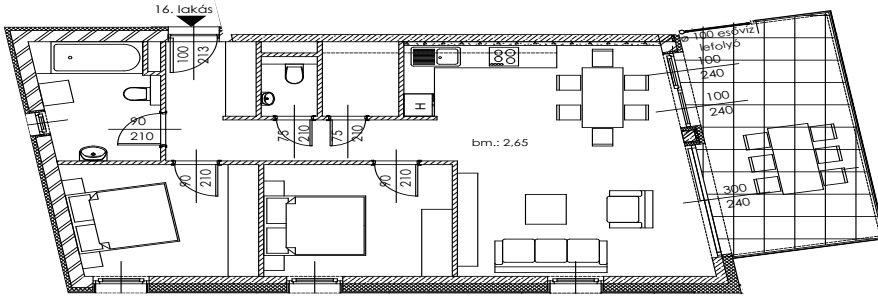
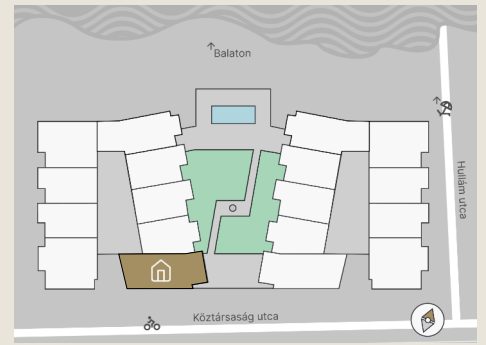




B.16

Apartment size: 74,35 m²
Terrace size: 19,39 m²



Entrance Hall	9,52 m ²
Living Room	25,52 m ²
Room I	11,10 m ²
Room II	11,04 m ²
Kitchen	5,70 m ²
Bathroom	6,94 m ²
WC	1,54 m ²
Storage	3,00 m ²

The property measurements are based on the permit plans and may change slightly during the finalization of the construction plans and execution process.



+36 20 44 77 615
www.lellewave.hu
ertekezes@lellewave.hu

LelleWave Residence is being built in Balatonlelle, **just 100 meters from the waterfront**, on the corner of Köztársaság and Hullám Street. The building is located only a 7-minute walk from the city center, putting all urban services within easy reach.

Key Highlights of LelleWave Residence:

- ✓ Financing: **20%** down payment, **80%** upon handover.
- ✓ Value-retaining location with continuously growing demand.
- ✓ Ideal for both personal use and rental investment.
- ✓ Balatonlelle is **among the top 5 most popular destinations** at Lake Balaton.
- ✓ Premium Quality: High-end construction with energy-efficient smart solutions.

