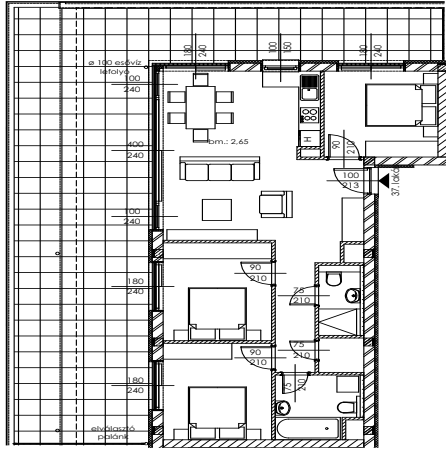
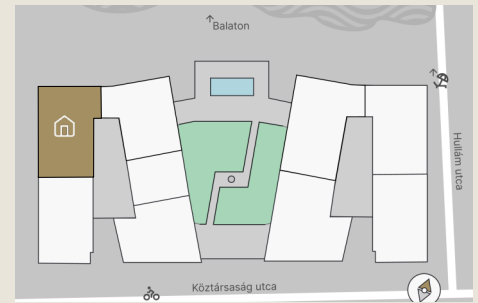




B.37

Apartment size: 80,80 m²
Terrace size: 80,32 m²



Entrance Hall	4,74 m ²
Living Room	24,31 m ²
Room I	10,45 m ²
Room II	11,32 m ²
Room III	11,17 m ²
Kitchen	5,03 m ²
Bathroom I	5,25 m ²
Bathroom II	2,76 m ²
Storage	1,62 m ²

The property measurements are based on the permit plans and may change slightly during the finalization of the construction plans and execution process.



+36 20 44 77 615
www.lellewave.hu
ertekesites@lellewave.hu

LelleWave Residence is being built in Balatonlelle, **just 100 meters from the waterfront**, on the corner of Köztársaság and Hullám Street. The building is located only a 7-minute walk from the city center, putting all urban services within easy reach.

Key Highlights of LelleWave Residence:

- ✓ Financing: **20%** down payment, **80%** upon handover.
- ✓ Value-retaining location with continuously growing demand.
- ✓ Ideal for both personal use and rental investment.
- ✓ Balatonlelle is **among the top 5 most popular destinations** at Lake Balaton.
- ✓ Premium Quality: High-end construction with energy-efficient smart solutions.

