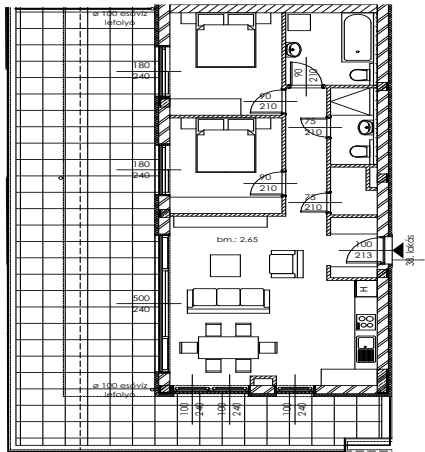
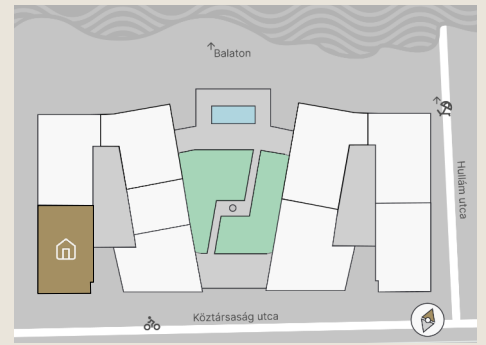




B.38

Apartment size: 72,98 m²
Terrace size: 71,34 m²



Entrance Hall	2,86 m ²
Living Room	25,78 m ²
Room I	10,72 m ²
Room II	11,47 m ²
Kitchen	5,77 m ²
Bathroom I	6,15 m ²
Bathroom II	3,13 m ²
Storage	1,93 m ²

The property measurements are based on the permit plans and may change slightly during the finalization of the construction plans and execution process.



+36 20 44 77 615
www.lellewave.hu
ertekesites@lellewave.hu

LelleWave Residence is being built in Balatonlelle, **just 100 meters from the waterfront**, on the corner of Köztársaság and Hullám Street. The building is located only a 7-minute walk from the city center, putting all urban services within easy reach.

Key Highlights of LelleWave Residence:

- ✓ Financing: **20%** down payment, **80%** upon handover.
- ✓ Value-retaining location with continuously growing demand.
- ✓ Ideal for both personal use and rental investment.
- ✓ Balatonlelle is **among the top 5 most popular destinations** at Lake Balaton.
- ✓ Premium Quality: High-end construction with energy-efficient smart solutions.

